

ACTIVE GREEN PRODUCTS

FRANCHISEE





ACTIVE GREEN PRODUCTS

&

ACTIVE SMART HUB

Salient Features

- Built-up space 1,20,000 sft.
- IGBC Green Rated
- Advanced CNC Machinery
- Experience Centre
- Resources & Inventory



Active Green Products is engaged in manufacturing and distribution of various building materials as per list attached in Annexure I and are the owners of the trade name and trademark 'Active.in and deals with various international brands as a Premium Fabrication partner and channel partners for windows, doors, façade, skylights, Home automation, BMS, Fire systems and lighting etc.

Most of our existing customers are very happy with our products and after sales service there by getting business through the referral customers.



Infrastructure :

- New Factory with advanced CNC Machines
- 2 showrooms at Gachibowli & 1 in Factory

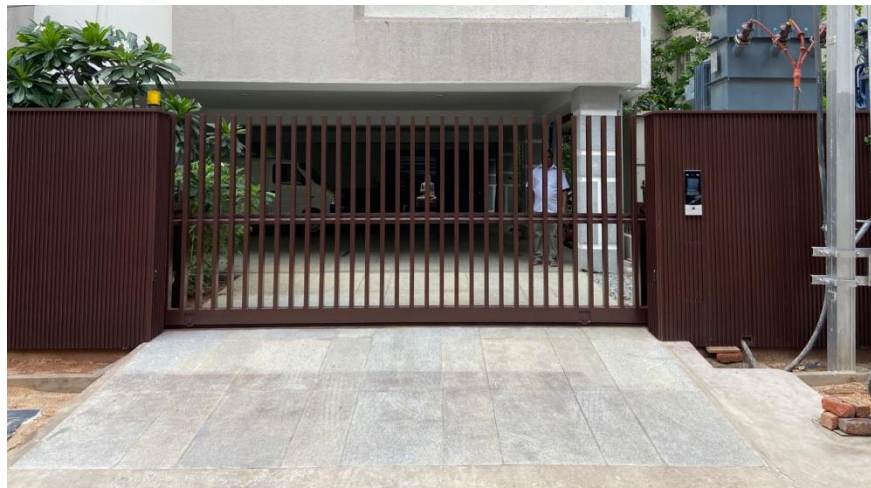
Our Showroom



Our Showroom



New Showroom - Active Smart Hub



New Showroom - Active Smart Hub



New Showroom - Active Smart Hub



New Showroom - Active Smart Hub



New Showroom - Active Smart Hub



New Showroom - Active Smart Hub



Mini Home theater

New Showroom - Active Smart Hub



- **Projector** : Barco Loki CS (Belgium)
- **Screen** : DT Screens (Italy)
- **Sound System** : SLS Dolby (UK)
- **Seating** : Jaymar (Canada)
- **Motion Technology** : D-Box (Canada)
- **Size** : 38' x 26'

It is the first home theatre experience center in India having Barco Loki CS with D-Box experience

New Showroom - Active Smart Hub



Endo Lighting



New Showroom - Active Smart Hub



1.5 PP Outdoor Active LED (130")



Renson Motorized Pergola (Belgium)

WOODEN DOORS – PROJECTS & INDEPENDENT HOMES

- Custom Design Main Doors
- Internal Doors
- Project series Doors

Doors for Homes



Fabrication Facilities :

- New Factory at Sulthanpur
1.30 lakh Sft. with advanced
CNC Machines
- Production Capacity – 150
windows per day
- 300+ Employees
- German Machinery
- inventory
- Experience & Credentials





Fabrication Facilities :







Showrooms at Factory

- Schueco windows & Façade
- Active Aluminum windows, Façade & Railings
- Saint-Gobain
- AkzoNobel color profiles



Resources

300 Plus Employees



Inventory



Objective of Franchisee

Active Green Products is established as a leading company to offer multiple products to the Home and Industry from the last 10 years and keep on adding new products and technology to increase the product range.

In line with our growth plan, increased infrastructure, resources and inventory. Now appointing franchisee Exclusively with the objectives:

1. To increase the market share and penetration
2. To increase the the geographical presence
3. Joining hands with the like minded people to grow in business together.
5. To start and streamline business in a quick time form the franchise with necessary support.



A franchisee is a small business that operates under the trademark of a parent company.

Throughout inception, the franchisee receives guidance, consultation, and support from the franchisor regarding internal operations, such as hiring, marketing, corporate strategy, and more.



Associated with



Active Smart Hub
Automation Solutions for Home & Industry



Product Range – Windows & Doors

- Schueco Aluminium Sliding windows:
- Schueco Aluminium casement / top hung windows
- Schueco Aluminium sliding doors:
- Schueco aluminium Casement doors
- Schueco Façade systems:
- AS 39 SC.NI & AS 39.NI
- Schueco AS SC 30.NI
- ASS 39 PD NI
- AS 39 SC.NI SG
- AS PD 70.NI
- ASS 70 FD
- ASS 70 FD-90°-CORNER OPENING TYPE
- ASS 50
- ASS 50.NI
- AS ICD 50.NI



DOORS & WINDOWS

- AW 40 NI
- TropTec AW 48 NI
- TropTec AW 58 NI
- AWS 50.NI
- ADS 50.NI
- AWS 65
- ADS 65 NI
- ADS 65
- AWS 70 HI
- AWS 114
- CURTAIN WALL SYSTEM
- TropTec SC 50 NI
- TropTec SC 50 SG NI
- FWS 35 PD
- FWS 50
- FWS 60
- Troptec UC 65 SG NI
- UCC 65 SG
- Active Aluminium window/ railings and façade systems:
- Active Aluminium casement / top hung windows
- Active Aluminium sliding windows
- Active Aluminium casement doors
- Active Aluminium sliding doors
- Active Aluminium slim series doors
- Active Aluminium façade system
- Active aluminium Railing systems
- Easy Slim System
- Spigot system
- Side Mount system
- Level Line system
- Cross Bar system (Balusters)
- Easy Slim System
- MOD0749



Distribution

- Garage doors
- Fire rated, commercial and residential doors
- Wooden doors
- ACP / Funder max
- Patch fitted doors and partitions
- Motorized Pergola



Product Range

Home Automation

- Gate Automation
- Video Door Phone
- CCTV Surveillance
- Intrusion Alarm
- Digital Door Lock
- Lighting Control
- Shades Control
- Climate Control
- Smart Irrigation
- Pool Control
- Networking & WiFi
- Multi-Zone Audio
- Video Distribution
- Lighting
- Indoor Lighting
- Outdoor Lighting
- Tunable Lighting
- Industrial Lighting
- High-end Audio Video
- Home Cinema (Home Theatre)
- Professional Audio
- BGM
- Conference Room
- Video wall / Command Control Center
- Acoustic Design
- BMS (Building Management System)
- Digital Analog Controls
- HVAC Control



Product Range

- Water & Energy Metering
- ELV (Extra Low Voltage)
- Fire Alarm & Fighting Systems
- PA System
- Access Control
- Security
- Networking
- Central Vacuum System
- Fresh Air System



Company Support

- On par with the growth in business, adding infrastructure, resources and inventory from time to time.
- Increasing product range keeping in view of the demand for the new products.
- Advertising and sales promotion to increase awareness and there by sales.
- Participation in leading Exhibitions to promote products
- Participation in Builders and Architects meetings
- Updating website at regular intervals and campaigns in social media
- Focus on after sales service to keep our existing customers happy

Support to Franchise:

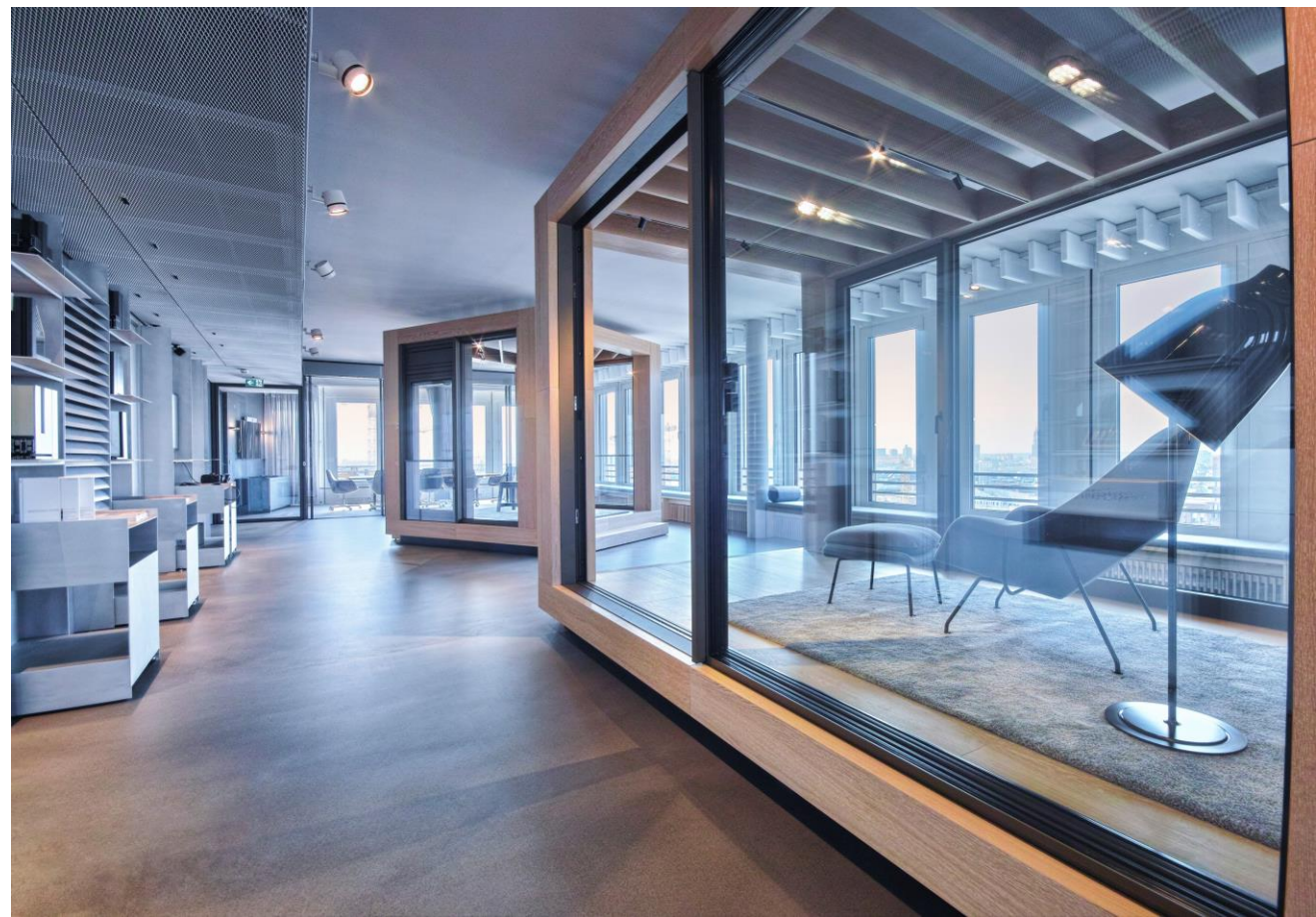
- Support in showroom design and execution
- Training: product and sales
- Sharing leads and assisting in closing the orders
- Supply, installation and after sales service
- Support in meeting architects / builders / PMC in the territory
- Support in participation of Exhibition and meetings
- Supply of printed stationery & brochures branding at showroom and sites.

Company Support

Franchisee Role and Responsibilities :

- Establishing showroom as per the design and display of products
- Maintenance of the showroom
- Promotion of the showroom
- Increasing the foot print to the showroom
- Demonstration of products to the potential customers, architects and builders
- Follow up with Active Green Office for quotations and order closing, supply, installation and after sales service.
- Meetings Architects, Builders and potential customers in the territory to increase the sales.
- Payment collection towards advance and balance before supply as per the payment terms mentioned in the quotation.

Reference images - Franchise



Reference images - Franchise





THANK YOU !!